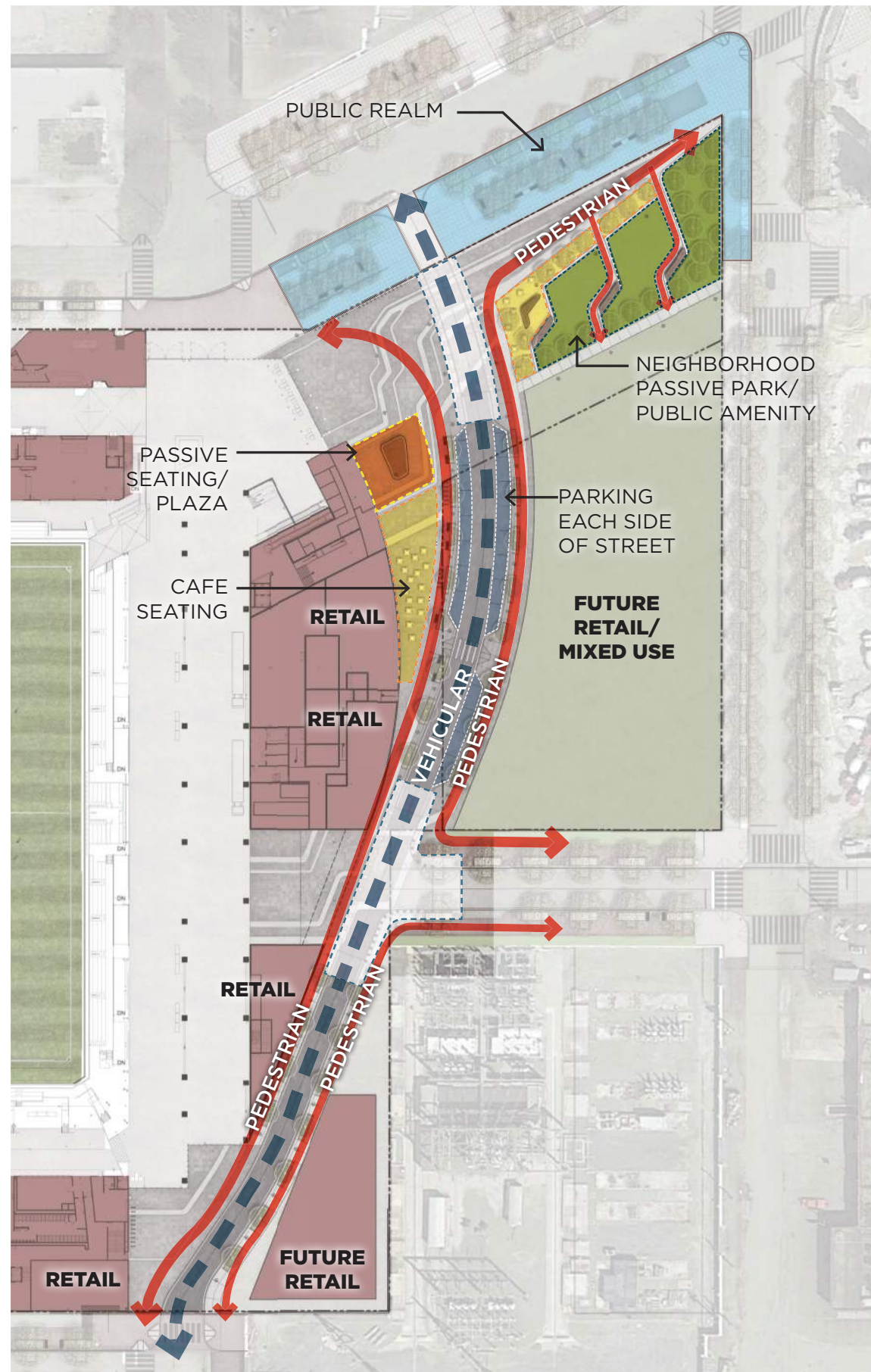

PARK/PLAZA DESIGN **GOALS:**

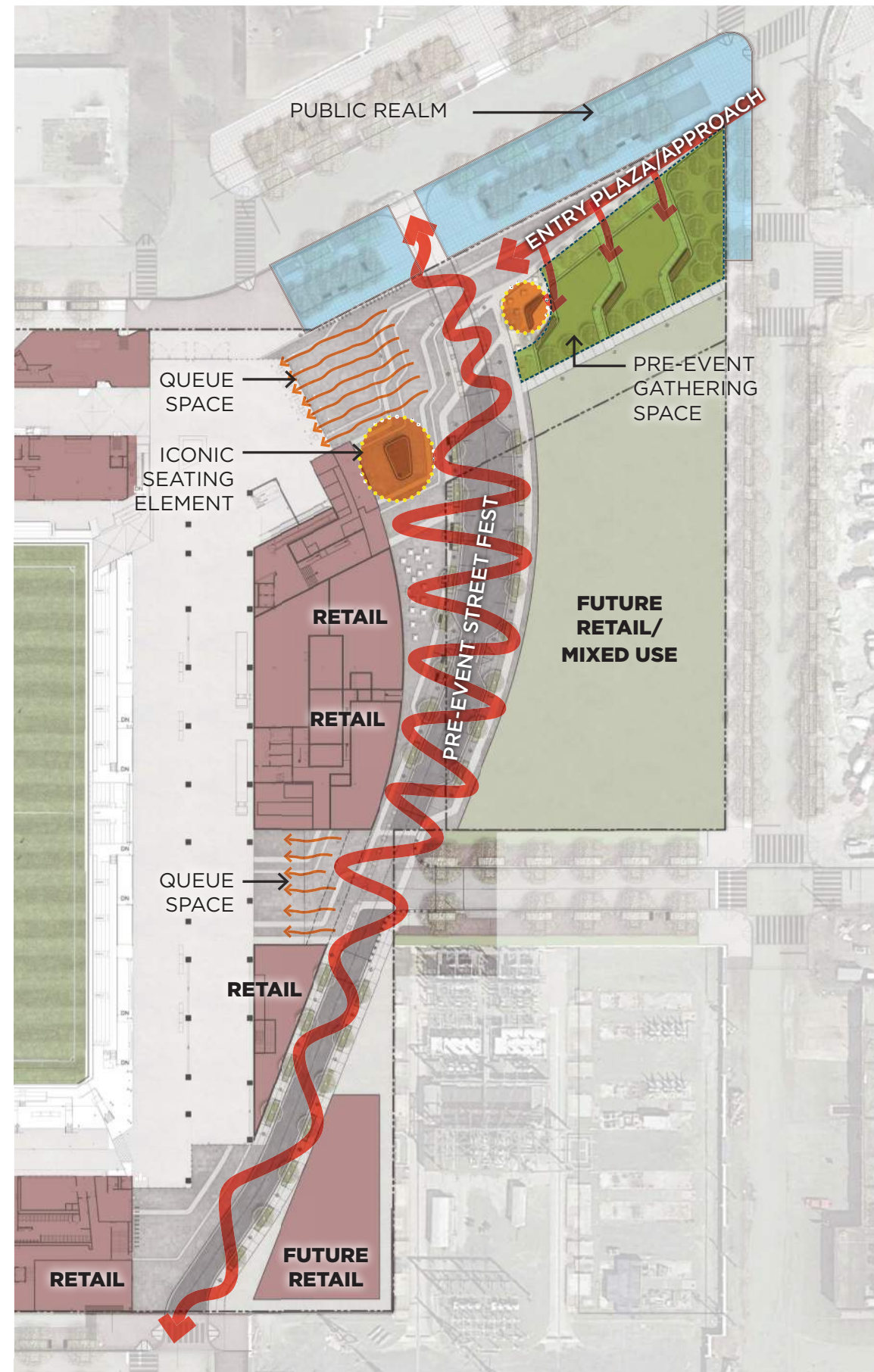
1. Integrated into the Buzzard Point Vision Framework plan
2. A true public amenity year round
3. A variety of seating and gathering locations
4. A flexible space to host community functions
5. A clear separation of stadium function space and park space
6. A grass park space that's easy to access
7. A grass park space that's easy to maintain
8. A park space that compliments the stadium design
9. A park space that supports the functions of the stadium on matchday



NOTE: PRECEDENT IMAGERY SHOWN ON THIS SHEET REPRESENTS DESIGN INTENT, EMOTIONS, AND LANGUAGE AND ARE NOT MEANT AS A LITERAL REPRESENTATION OF PROPOSED SITE ELEMENTS.

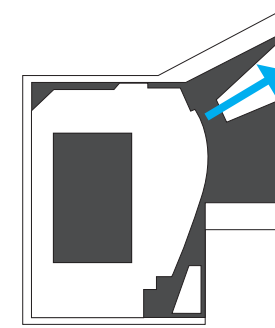


NON-EVENT DAY SITE PROGRAM DIAGRAM

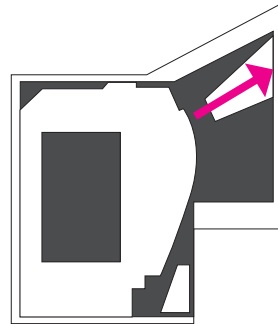


EVENT DAY SITE PROGRAM DIAGRAM

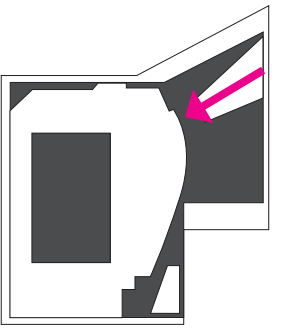
// PUBLIC PARK @ HALF & POTOMAC



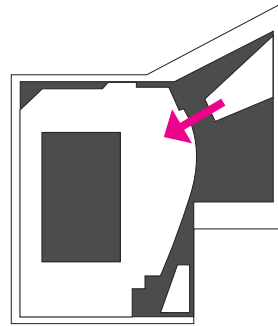
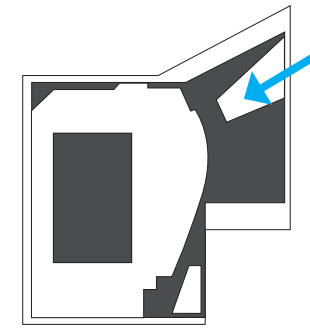
TERRACE BENCH SEE DETAIL ON SHEET 2.10



// PUBLIC PARK @ HALF & POTOMAC



// PUBLIC PARK @ HALF & POTOMAC





LEGEND

- 5' x 10' GRAY UNIT PAVERS
- C.I.P. CONCRETE PAVEMENT - INTEGRAL COLOR 'CARBON'
- C.I.P. CONCRETE PAVEMENT - GRAY
- NATURAL TURF
- DECOMPOSED GRANITE
- DECIDUOUS SHADE TREE
- ORNAMENTAL TREE
- PEDESTRIAN LIGHT
- PLAZA TABLES/ CHAIRS
- BENCH
- PIPE BOLLARD
- MILLED GRANITE BLOCK - 3W x 3D x 2H
- BIKE RACK

NOTES

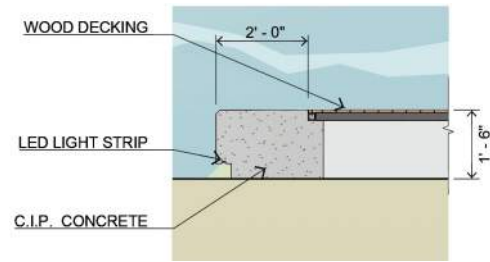
1. STREETScape MATERIALS/DETAILS ARE SHOWN IN CONCEPT FOR ILLUSTRATIVE PURPOSES. THE FINAL MATERIALS OF THE SITE STADIUM IMPROVEMENTS WILL BE SELECTED DURING DETAILED DESIGN PHASES OF WORK AND CONFORM WITH APPLICABLE DESIGN AND PERMITTING STANDARDS.
2. PLANT SPECIES SELECTIONS IDENTIFIED ON THE PLANS/ SCHEDULES ARE SHOWN TO ILLUSTRATE DESIGN INTENT ONLY. THE PURPOSE IS TO GENERALLY DEFINE PLANT SIZE, CHARACTER, AND LOCATIONS. REFINEMENTS TO THE PLANTING DESIGN AND FINAL SELECTION OF ALL PLANT MATERIALS CONSISTENT WITH THE SPECIES SHOWN SHALL BE DEVELOPED DURING DETAILED DESIGN PHASES OF WORK.
3. ALL R.O.W. IMPROVEMENTS ARE SHOWN FOR ILLUSTRATIVE PURPOSES AND ARE BY OTHERS.
4. BUILDING LAYOUTS ARE ILLUSTRATIVE ONLY AND SUBJECT TO CHANGE ON FINAL PLAN.
5. PARCEL B IS NOT A PART OF STADIUM PUD SUBMISSION, DESIGN INTENT SHOWN FOR REFERENCE ONLY.
6. DISTRICT OF COLUMBIA RESPONSIBLE FOR DESIGN OF R.O.W. IMPROVEMENTS, DESIGN INTENT SHOWN FOR REFERENCE ONLY.

POPULOUS
Marshall Moya Design

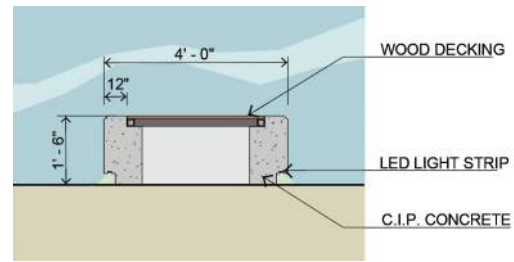


DC UNITED SOCCER STADIUM

100 Potomac Avenue, SW
Washington, DC 20024



L ICONIC SEATING ELEMENT DETAIL
N.T.S.



K TERRACE BENCH DETAIL
N.T.S.



J MILLED GRANITE BLOCK
SIZE: 3' W x 3' D x 2' H



I BIKE RACK
TO MATCH PUBLIC REALM SCOPE



H BENCH



G PEDESTRIAN LIGHT



F PLAZA TABLE AND CHAIRS



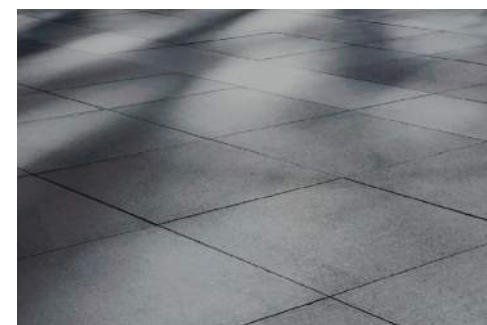
E ORNAMENTAL TREE
EASTERN REDBUD



D DECIDUOUS SHADE TREE
LONDON PLANETREE 'BLOODGOOD'



C GRAY UNIT PAVERS
TO MATCH R.O.W. IMPROVEMENTS
DESCRIPTION: PERMEABLE UNIT PAVERS
COLOR: GRAY
SUPPLIER: BORGERT
SIZE: 5' x 10'



B C.I.P. CONCRETE PAVEMENT - INTEGRAL COLOR 'CARBON'
DESCRIPTION: CAST-IN-PLACE CONCRETE
COLOR: COLORED W/ CARBON POWDER
FINISH: FINE HAIR BROOM FINISH
SUPPLIER: PORTLAND CEMENT CONCRETE
NOTES: DDOT STANDARD OR APPROVED EQUAL



A C.I.P. CONCRETE PAVEMENT - GRAY
DESCRIPTION: CAST-IN-PLACE CONCRETE
COLOR: GRAY
FINISH: FINE HAIR BROOM FINISH
SUPPLIER: PORTLAND CEMENT CONCRETE
NOTES: DDOT STANDARD OR APPROVED EQUAL

NOTES

1. STREETScape MATERIALS/DETAILS ARE SHOWN IN CONCEPT FOR ILLUSTRATIVE PURPOSES. THE FINAL MATERIALS OF THE SITE STADIUM IMPROVEMENTS WILL BE SELECTED DURING DETAILED DESIGN PHASES OF WORK AND CONFORM WITH APPLICABLE DESIGN AND PERMITTING STANDARDS.
2. PLANT SPECIES SELECTIONS IDENTIFIED ON THE PLANS/ SCHEDULES ARE SHOWN TO ILLUSTRATE DESIGN INTENT ONLY. THE PURPOSE IS TO GENERALLY DEFINE PLANT SIZE, CHARACTER, AND LOCATIONS. REFINEMENTS TO THE PLANTING DESIGN AND FINAL SELECTION OF ALL PLANT MATERIALS CONSISTENT WITH THE SPECIES SHOWN SHALL BE DEVELOPED DURING DETAILED DESIGN PHASES OF WORK.
3. ALL R.O.W. IMPROVEMENTS ARE SHOWN FOR ILLUSTRATIVE PURPOSES AND ARE BY OTHERS.
4. BUILDING LAYOUTS ARE ILLUSTRATIVE ONLY AND SUBJECT TO CHANGE ON FINAL PLAN.
5. PARCEL B IS NOT A PART OF STADIUM PUD SUBMISSION, DESIGN INTENT SHOWN FOR REFERENCE ONLY.
6. DISTRICT OF COLUMBIA RESPONSIBLE FOR DESIGN OF R.O.W. IMPROVEMENTS, DESIGN INTENT SHOWN FOR REFERENCE ONLY.

POPULOUS
Marshall Moya Design



DC UNITED SOCCER STADIUM
100 Potomac Avenue, SW
Washington, DC 20024